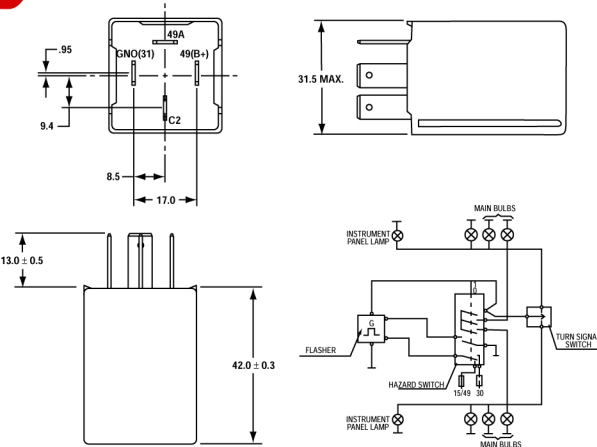


# LEDLight.com



## EP26-Electronic Flasher

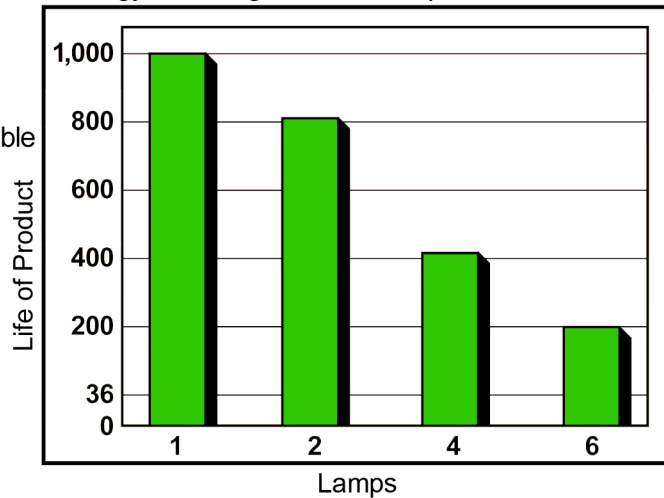
- Precise Square Wave I.C. Controller
- High Temperature Plastic Enclosure
- Four Pin I.S.O. Terminal
- Solid State Relay Driver Technology
- High Quality O.E.M. Printed Circuit Board Materials
- Quality and Durability Equal to O.E.M. Products
- Meets or Exceeds D.O.T. Requirements



## Application:

- CURRENT MODEL DOMESTIC VEHICLES (Since 1989)
  - For 4 Terminal Flasher Applications
  - For 2 Lamp Turn Signal, 4 Lamp Hazard Flasher Applications, LED Compatible

Technology vs. Design Life vs. Lamp Load



## Design Life:

- 600 Hours as a Combination Flasher

| CHARACTERISTIC      | MIN | MAX | UNIT         |
|---------------------|-----|-----|--------------|
| Load Rating         | 2   | 6   | Lamps        |
| Flash Rate          | 60  | 120 | Flash/min    |
| Duty Cycle          | 35  | 75  | %            |
| Time to First Flash |     | .75 | Seconds      |
| Voltage Drop        |     | .4  | V @ Max Load |
| Voltage Range       | 9   | 16  | Volts        |
| Temperature Range   | -40 | +85 | Degrees C    |