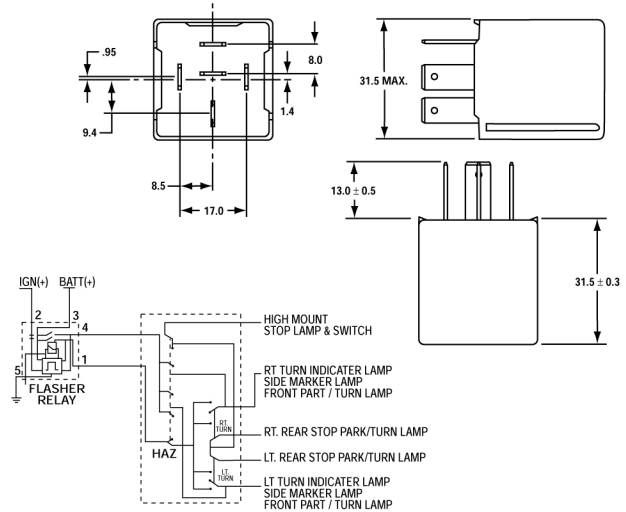




## EP27-Electronic Flasher

- Precise Square Wave I.C. Controller
- High Temperature Plastic Enclosure
- Five Pin I.S.O. Terminal
- Solid State Relay Driver Technology
- High Quality O.E.M. Printed Circuit Board Materials
- Quality and Durability Equal to O.E.M. Products
- Meets or Exceeds D.O.T. Requirements



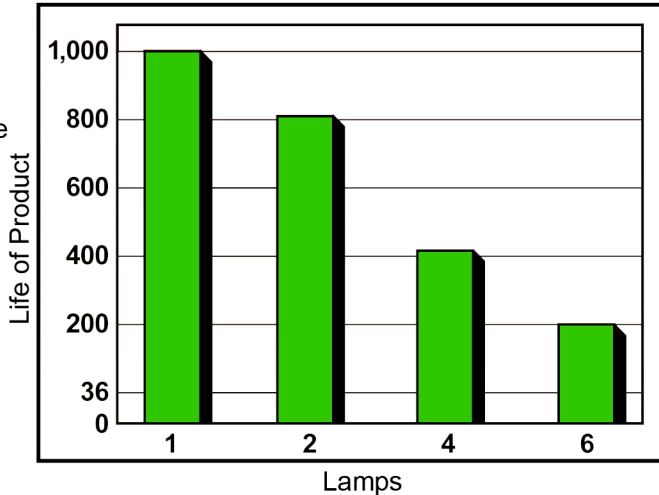
## Application:

- CURRENT MODEL DOMESTIC VEHICLES (Since 1994)
  - For 5 Terminal Flasher Applications
  - For 2 Lamp Turn Signal, 4 Lamp Hazard Flasher Applications, LED Compatible

## Design Life:

- 600 Hours as a Combination Flasher

Technology vs. Design Life vs. Lamp Load



CHARACTERISTIC	MIN	MAX	UNIT
Load Rating	2	6	Lamps
Flash Rate	60	120	Flash/min
Duty Cycle	35	75	%
Time to First Flash		.75	Seconds
Voltage Drop		.4	V @ Max Load
Voltage Range	9	16	Volts
Temperature Range	-40	+85	Degrees C